

Country of Manufacture - Italy

Harken, Inc.

N15W24983 Bluemound Rd., Pewaukee, WI 53072-4974 USA

Telephone: +1 262 691-3320, Fax: +1 262 701-5780

Web: www.harken.com

Email: harken@harken.com



## Protect Connect Power Tool Adapter

Part Number: INHDTOOL

### Package Contents

Item	Description	Qty.
A	Heavy duty socket assembly	1
B	M8 flat head machine screw	1
C	M6 socket head cap screws (pre-coated with Loctite®)	6

Loctite is a registered trademark of Henkel AG & Company KGaA.

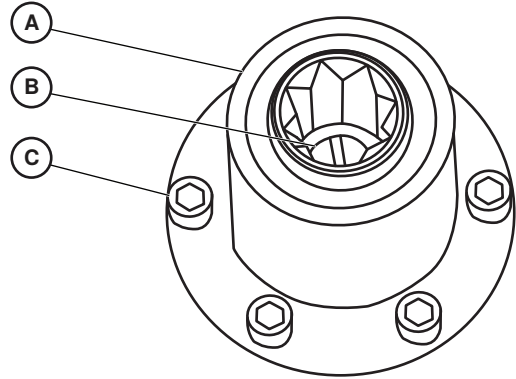
### Required Tools

- Medium flat screwdriver
- 5 mm Allen wrench
- Strap wrench or adjustable jaw pliers

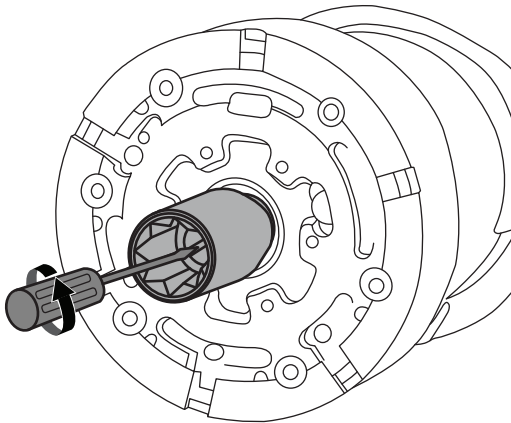
**NOTE:** Substantial force may be needed to loosen the M8 screw. Use a strap wrench to keep winch drum from rotating if unable to loosen with a screwdriver alone. Alternatively, use an adjustable jaw pliers to keep the socket assembly from rotating.

### Installation

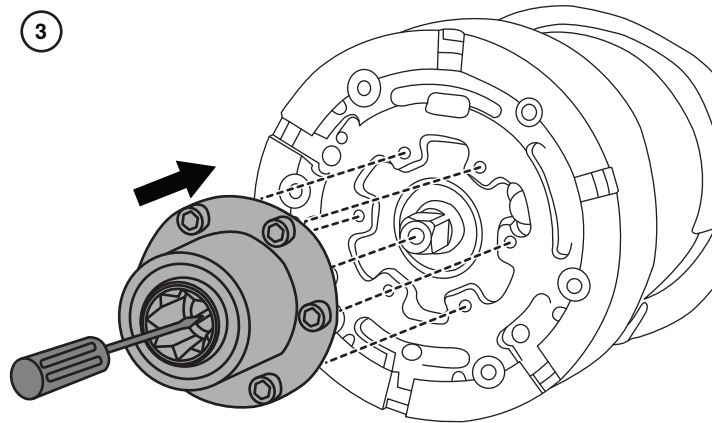
See diagrams below for installation procedure. The procedure is identical for all models of Winch LokHead 500 (INLH500, INLH500KIT, INLH500KIT.US).



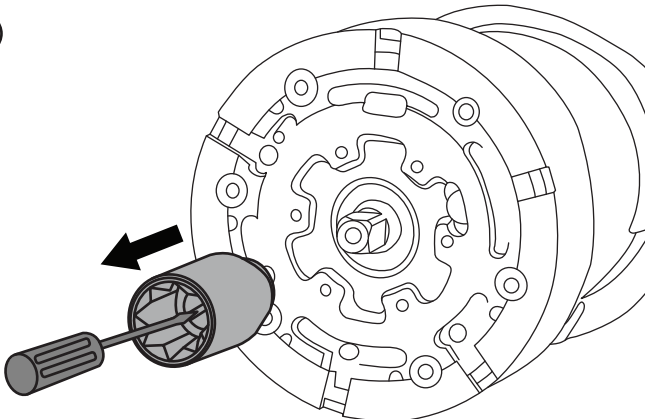
1



3



2



4

